



Newry High School

BOARD OF GOVERNORS
ANNUAL REPORT

2010 – 2011



Newry High School
23 Ashgrove Road
Newry
Co Down
BT34 1QN

Principal: Ms F Pride, B Ed (Hons) NPQH

Tel. : 028302 62383

Fax. : 028302 65665

E-mail : info@newryhigh.newry.ni.sch.uk

Web Site : www.newryhigh.com

Page Number	Contents
4	Board of Governors
5	Aims, Objectives and Ethos
6	Organisation and Management
9	General Information
12	Assessment Outcomes – Key Stage 3
13	Curriculum Provision
15	Careers Education, Information, Advice and Guidance
16	Exam Performance
19	Examination Trends
24	Pastoral Care
25	Financial Summary
26	Pupil Successes – Overview of the Year

THE BOARD OF GOVERNORS for the term 2009-2013

The Board of Governors has overall responsibility for the effective management of the school. Its membership includes SELB representatives, Transfer representatives, elected Parent Governors, two Teacher Governors elected by the teaching staff and three Co-opted Governors. The Board therefore represents all the main interest groups concerned with the school. The Governors have particular responsibilities in relation to the curriculum, the appointment and dismissal of staff, admissions to the school, discipline, school funds and building.

SELB REPRESENTATIVES

Mr F H Bell, Mr S Cooper, Mr D McCabe, Mr J Saunders

TRANSFEROR REPRESENTATIVES

Mr D Kennedy, Mrs A McGaffin, Mr N McGuffin, Reverend D Murphy

PARENT REPRESENTATIVES

Mrs D Blakely, Mrs L Clements, Mrs J Stevenson, Mr C Whiteside

TEACHER REPRESENTATIVES

Miss A Blakely, Mrs E McMurray

PRINCIPAL

Ms F Pride

CO-OPTED GOVERNORS

Mrs J Doran, Mr D Ross, Mrs Y Willetts

The term of office of all governors, except the Principal, will expire in 2013.

Chairman – Mr C Whiteside

Vice-Chairman – Mr S Cooper

Secretary to the Board of Governors – Ms F Pride

The following Board of Governors' meetings were convened during the 2010-2011 academic year:

Full Board meetings:

15 th December, 2010	10 th January, 2011	31 st January, 2011
16 th March, 2011	4 th May, 2011	22 nd June, 2011

Staffing Sub-Committee meetings:

3 rd November, 2010	18 th November, 2010	26 th January, 2011
7 th February, 2011	28 th February, 2011	7 th March, 2011
24 th March, 2011	23 rd May, 2011	22 nd June, 2011

Salary Sub-Committee meetings:

4th May, 2011

Finance Sub-Committee meetings:

27th May, 2011

AIMS, OBJECTIVES AND ETHOS

At Newry High School we aim to develop the knowledge, skills, attitudes and values, which enable our young people to participate with increasing independence as valued members of the community. Our pupils are educated within a framework of high expectations which facilitates and celebrates achievement, and which values the partnership with parents and all other stakeholders.

The school has a positive ethos, which has its foundation in mutual respect, collaborative decision making and effective teamwork.

At Newry High School we value each young person as an individual and we seek to develop their uniqueness through offering a wide and varied curriculum.

Aims of the School

- Aim 1** To provide a broad, balanced, coherent and relevant curriculum which will help all pupils acquire knowledge, skills and practical abilities in relation to their everyday needs.
- Aim 2** To create a supportive and disciplined environment which will foster the individual growth and development of caring and responsible young people.
- Aim 3** To promote close links between the school and
- (i) the home
 - (ii) feeder primary schools
 - (iii) other secondary schools
 - (iv) tertiary education establishments and employers
 - (v) the local community
 - (vi) outside agencies
 - (vii) former pupils
- Aim 4** To provide opportunities for pupils to appreciate, and contribute to, human achievements in art, music, sport, science and technology.
- Aim 5** To prepare pupils for their adult lives, at home, at work, at leisure, and to act as responsible citizens.

Mission Statement

Newry High School exists to serve the community of Newry and surrounding district by providing an appropriate and challenging curriculum for all pupils.

“Quality Education for All”

ORGANISATION AND MANAGEMENT

The Board has delegated to the Principal the responsibility of ensuring that its wishes are carried out in the day-to-day organisation and administration of the school. To achieve these objectives the Principal and School Management Teams take specific responsibility for the management of the main areas in the school's development – Curriculum and Pastoral Care.

The school's Senior Leadership Team, comprising the Principal and the two Vice - Principals, had scheduled meetings each week.

Management of Pastoral Care is under the oversight of the Pastoral Care Team which is composed of six Year Heads under the chairmanship of a Vice-Principal. Six meetings were held during the school year.

Heads of Department meet under the chairmanship of a Vice-Principal. Heads of Department are responsible for the organisation and management of their subject areas and present their Departmental Policy and Development Plans to the Principal and their Line Manager for annual review. Six formal HOD meetings were held during the school year.

Departmental meetings were held on a regular basis throughout the year and minutes are submitted to the Principal/Line Manager.

STAFFING

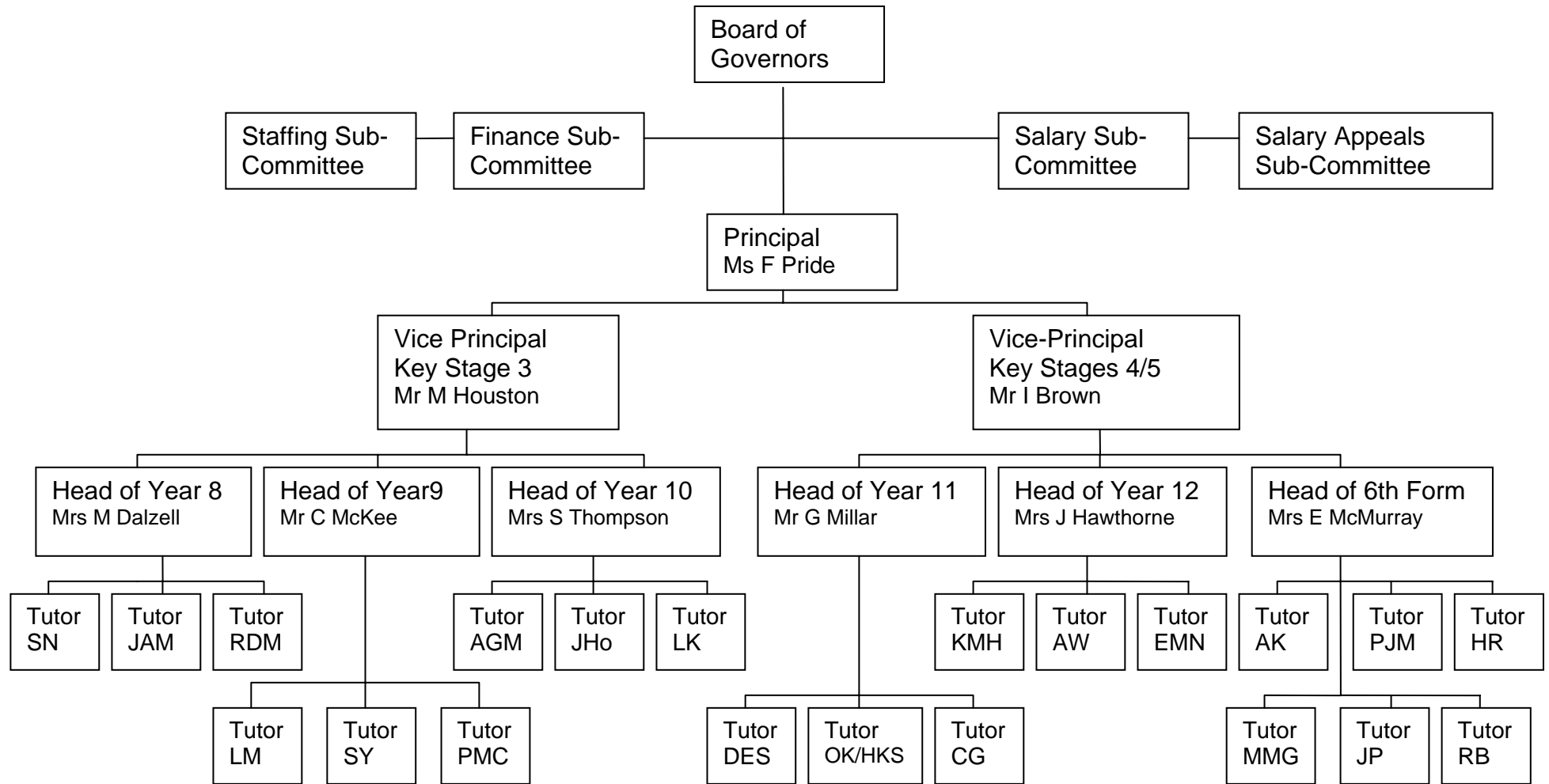
The Staffing for 2010-2011 was as follows:

Principal	1
Vice-principals	2
Teachers	33
Caretakers	2
Technicians	4
Classroom/Domestic Assistants	7
Clerical Staff	3.7

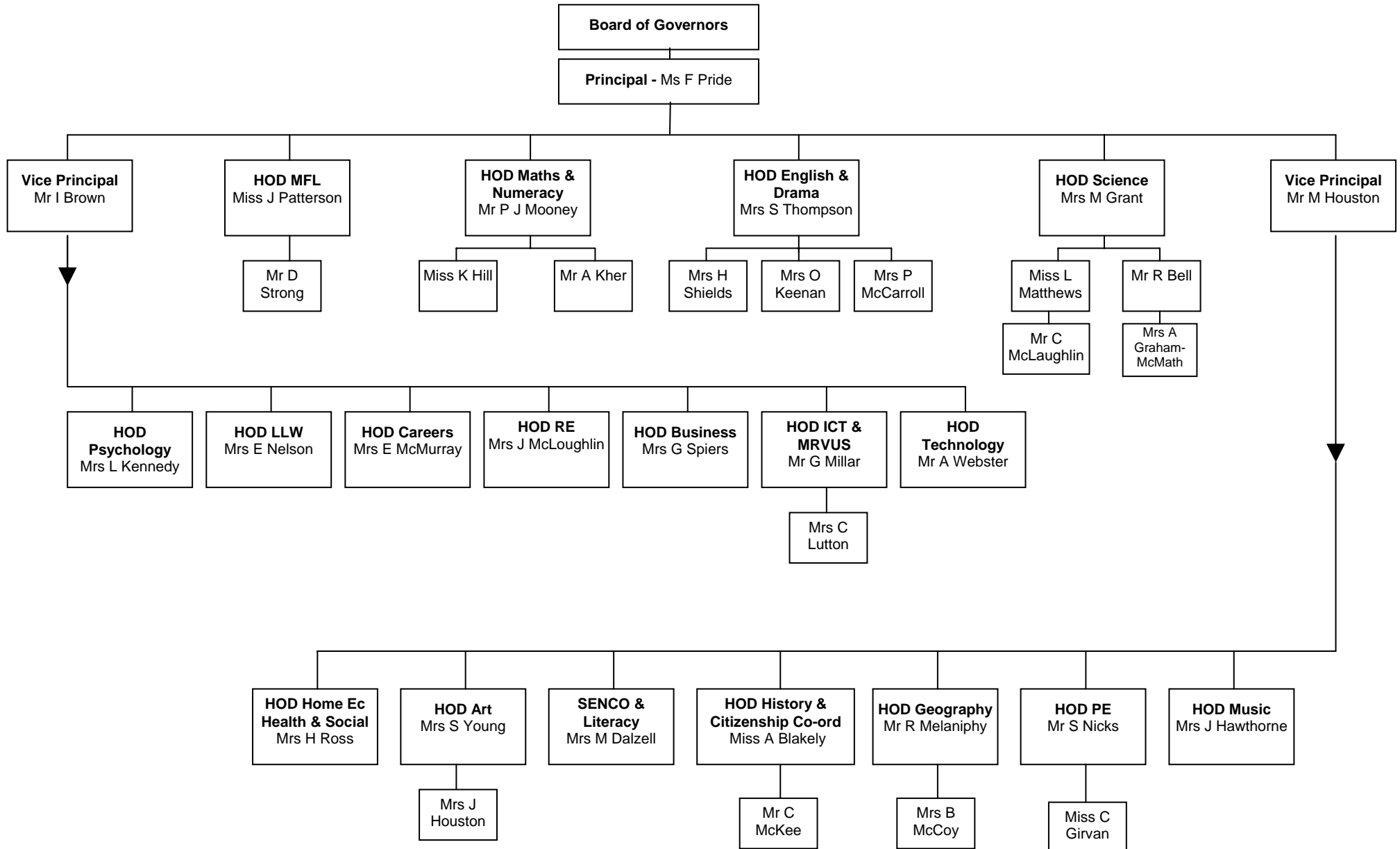
The total number of teachers employed in the school was Principal plus 35 teachers, comprised as follows:

	(equivalent)
▪ 29 full-time permanent	(29.0)
▪ 4 part-time permanent	(2.6)
▪ 2 temporary	(1.6)
▪ SRC cover	<u>(0.2)</u>
▪ Total 35 teachers	<u>(33.4)</u>

PASTORAL MANAGEMENT STRUCTURE



LINE MANAGEMENT STRUCTURE 2010-11



GENERAL INFORMATION

Newry High School is a medium sized 11-18 all ability co-educational school. It has a maximum capacity of 580 and draws pupils from all sections of the community. The school prides itself on its academic achievements, not only from top academic stream pupils, but also from those pupils of lower academic ability who are taught in smaller classes where they can receive more individual attention.

Newry High School is a uniquely inclusive school in terms of ability, religion and ethnic diversity. The school has a good reputation for its academic achievement, sporting success and pastoral care and it offers a wide range of extra-curricular experiences to its pupils. Situated on the outskirts of the resurgent new City of Newry the school is well equipped and maintained and well placed to meet the challenges of the future.

SCHOOL HOURS

The school day for pupils commenced with Registration at 8.35 a.m. followed by Assembly at 8.45 a.m. Classes began at 9.00 a.m. There were 8 teaching periods of 35 or 40 minutes in each school day.

Morning break: 10.55 – 11.10 a.m.

Lunch break: 1.05 - 1.40 p.m.

The school day ended at 3.00 p.m.

ADMISSIONS

Applications and admissions to Year 8		
	2009/2010	2010/2011
Applications	82	66
Admissions	78	61

ATTENDANCE

% attendance for the 2010-2011 school year was 89.3%

PRIZE GIVING

The annual Prize Night was held on Thursday, 21st October, 2010. Our Guest of Honour was Ms Susan McCann.

22 pupils received Full Attendance Certificates

48 pupils received Class Prizes (Years 8-11)

20 pupils received Duke of Edinburgh Bronze Awards

2 pupils received Duke of Edinburgh Silver Awards

Merit Challenge Winners:

Year 8 Amy Cartmill

Year 9 Lina Janaviciute

Year 10 Nicole Hempkin

Year 11 Taja McIlroy

Special Award Winners:

The New School of Motoring Cup for Academic Achievement	Mark Irwin
The Angela Livingston Cup for Outstanding Contribution to Art & Design at Key Stage 3	Eleanor Allen
The Pat Major Cup for Home Economics	Emma McAlinden
The Warnock Bequest for English Literature	Spiros Pasparakis
The Janine A Hanna Cup for GCSE English Vocational Award – Year 11	Jaimee-Lee McKenzie
Year 12	Kasia Slezak
The Newry Heritage Cup for Learning for Life and Work	Niamh Quinn
The Newry Heritage Shield for Services to the Community	Alex Hanna
	NHS Charity Committee
The McBlain Memorial Scholarship for GCSE (Boys)	Alex Hanna
	Ben McCartney
The Strahan Memorial Scholarship for GCSE (Girls)	Kelley Hunter
	Sarah Henning
The Warnock Bequest for Mathematics	Rebekah Ross
The Elaine McClure Cup for English Literature	Rebekah Ross
The R J Donaghy Cup for GCSE RE	Jaimee-Lee McKenzie
The Bank of Ireland Cup for Business Studies	Natasha Ogle
The Judith Lockhart-Revels Trophy for A Level Art	Emma McCullough
The J H Reid Cup for Science	Robert Boyd
	Alex Hanna
The J M Clements Prize for Chemistry	Rebekah Ross
The Lorna D Clements Prize for Physics	William Campbell
The Dorothy Cox Prize for French	Spiros Pasparakis
The McMinn Award for Geography	Cheryl Park
The Altnaveigh House Cup for History	Christopher Fullerton
The W B Neill Cup for Biology	Rebekah Ross
The O'Neill Cup for Music	Colin Berry
	Ethan Lowry
The Psychology Cup	Jacqueline Megaw
The Applied ICT Prize	Andrew Dalzell
	Craig McVicker
The Applied Health & Social Care Prize	Jacqueline Megaw
	Christopher Fullerton
The Applied Progress Cup	William Morrison
The Browne Cup for Hockey	Alex Irwin
The Michael Preston Award for Sporting Achievement	Christopher Fullerton
The RM McVeigh Cup for Academic Achievement at A Level	Jacqueline Megaw
	Rebekah Ross
The Newry High School Cup for Endeavour	Brian Harvey
Governors' Award	Rebekah Ross
	Alex Currie

One new trophy was awarded this year: The Applied Travel & Tourism Cup
Recipient – Claire McCrum

DESTINATION OF SCHOOL LEAVERS (Years 8-14) in 2010-2011

Number of pupils	123
Transferred	6%
Jobskills/Training/Apprenticeship	3%
Higher Education	30%
Further Education (non-degree)	36%
Employment	11%
Other	14%

STAFFING UPDATE

The end of every school year is always tinged with sadness when not only do we say goodbye to Year 14 and to some of Year 12, but we also sometimes say farewell to colleagues who have contributed greatly to the life of Newry High School. We said goodbye this summer to two long serving and much valued members of staff:

(i) Mr Mooney, Head of Maths, worked here for thirty five years. Mr Mooney obviously played a very significant role in the life of the school over the years and we thank him for all that he has done, for his absolute commitment and the true professionalism which he brought to his time in this school.

(ii) Mrs McCoy took up a post at Newry High School as Teacher of Geography and Biology on 1st September, 1998. Mrs McCoy has always been very loyal to the school, reliable, hardworking and dedicated. She had high standards and had the good of every pupil at the centre of everything she did. We thank Mrs McCoy for all that she did for Newry High School.

STAFF TRAINING AND DEVELOPMENT DAYS PROGRAMME **AUGUST 2010 – JUNE 2011**

Staff Development Days	Key Topics
24 th August, 2010	Departmental Planning
25 th August, 2010	Behaviour Management
26 th August, 2010	PRSD/Literacy & Numeracy
27 th August, 2010	Careers
28 th August, 2010	Departmental Work
ECD / School Improvement Days	Key Topics
29 th September, 2010 (Twilight)	Behaviour Management Review
1 st November, 2010 (Full day)	ALC Joint Training Day with other schools
5 th January, 2011 (Full day)	Use of Reasonable Force training and Post-Inspection Action Plan
19 th January, 2011 (Twilight)	Post-Inspection Action Plan
3 rd February, 2011 (Twilight)	VLE Training
18 th April, 2011 (Twilight)	Departmental Moderation time
31 st May, 2011 (Full day)	Assessment/Target Setting and Effective Use of Data

ASSESSMENT OUTCOMES – KEY STAGE 3

KEY STAGE 3 ASSESSMENT OUTCOMES SUMMARY

	English				Mathematics				Science			
	N.H.S		N.I.		N.H.S		N.I.		N.H.S.		N.I.	
	teacher assesse	external tests	teacher assesse	external tests	teacher assesse	external tests	teacher assesse	external tests	teacher assesse	external tests	Teacher assesse	External tests
	Level 5+ %											
2011	63.0	75.3	77.5	34.9	68.5	64.4	75.7	33.5	x	x	x	x
2010	59.7	74.4	78.1	38.1	73.2	73.1	75.5	41.3	x	x	X	x
2009	66.1	75.4	77.4	40.2	79.9	75.4	75.6	41.4	X	x	x	X
2008	64.6	55.3	77.7	47.1	68.7	71.9	72.8	47.8	X	x	x	x
2007	50.0	71.3	76.9	56.7	70.2	55.3	73.1	53.1	63.7	64.9	55.5	48.3
2006	56.9	62.2	75.7	72.4	66.3	79.9	72.1	72.5	84.2	77.8	73.6	68.7
2005	36.5	61.3	73.8	71.8	55.4	50.6	73.1	69.9	62.3	64.0	73.1	68.5
	Level 6+ %											
2011	43.8	21.9	50.8	14.8	45.2	35.6	49.5	17.7	X	x	x	x
2010	26.8	31.7	51.1	18.7	46.4	39.0	50.1	20.2	x	x	x	X
2009	30.7	35.4	51.0	20.2	43	40.0	50.8	21.5	x	x	x	x
2008	32.3	24.0	51.2	24.9	34.3	25.0	50.0	26.6	x	x	x	x
2007	25.5	26.6	51.3	31.2	38.3	31.9	49.1	32.9	44.6	37.2	34.0	27.5
2006	30.6	32.7	49.2	44.5	51.6	47.3	48.1	46.6	60.0	57.8	48.4	42.8
2005	12.2	37.3	48.9	45.7	32.4	33.3	49.2	45.4	36.6	45.3	46.8	44.5

CURRICULUM PROVISION

Key Stage 3 - Year 8 students were assigned to three broad ability sets, where arrangements were kept flexible to encourage each pupil to develop his / her individual talents and skills. This was done on the basis of information provided by Primary School Principals, backed up by the school's own internal assessment. Support systems were in place to assist students with difficulties in literacy and numeracy. Key Stage 3 students all followed a common curriculum that included the following subjects:

- Art & Design
- Drama
- Citizenship
- Education for Employability
- English
- French
- Geography
- History
- Home Economics
- Information Technology
- Mathematics
- Music
- Personal Development
- R.E.
- Science
- Technology & Design
- P.E.

Key Stage 4 - Pupils who reached the end of Key Stage 3, following discussions between student, parents and teachers, chose Key Stage 4 courses from a total of 23 subjects. A range of academic and vocational courses were offered. The flexibility that exists within the KS4 curriculum was used to match the courses with the ability, attainment and career aspiration of the student.

In the academic year 2010/11 we organised the four Year 10 classes into two main bands. Pupils in 10A and the majority of 10B were placed in a single Band called 11A (A1 & A2) where the '**A**' stood for '**Academic**'. These pupils studied a minimum of 10 GCSEs. Pupils mainly from 10C and 10D were placed into two slightly different parts of 11V - the second band i.e. (V1 & V2) where '**V**' stood for '**Vocational**'. These pupils studied up to 6½ GCSEs for 11V1 and up to 5½ GCSEs for 11V2.

Key Stage 3 students who were interested in pursuing a career in trade were given the opportunity to follow an occupational link course with Southern Regional College and were jointly prepared for the CCEA Occupational Studies qualification. This course allowed pupils to choose options from a range of occupational areas and achieve a single or double award qualification which is equivalent to one or two GCSEs. They were able to choose from six main subject areas:-

- 1) Design & Creativity
- 2) Technology & Innovation
- 3) Construction
- 4) Business & Services
- 5) Environment & Society
- 6) Engineering Services

Pupils at Key Stage 4 study had the opportunity to study:

- Art & Design
- Biology
- Business Studies
- Citizenship
- Chemistry
- Drama
- Education for Employability
- English Language
- English Literature
- French
- Geography
- History
- Home Economics
- Information Technology
- Learning for Life & Work
- Mathematics
- Motor Vehicle & Road User St
- Music
- Occupational Studies
- Personal Development
- P.E.
- Physics
- R.E.
- Science Single Award
- Technology & Design

Key Stage 5

The range of qualifications provided by Newry High School for the Sixth Form was developed to:

- allow students to choose programmes which meet their needs and gain credit for their achievements;
- ensure that the qualifications offered to students are worthwhile and valued;
- enable students, where desirable and appropriate, to mix and match different types of qualifications;
- offer clear progression routes into further and higher education, training and employment.

Year 13 students were able to choose from 23 subjects offered at GCE and Applied GCE AS Level. Year 13 and Year 14 students, in addition to their AS and A2 classes, were timetabled for periods of private study and had access to the facilities of the 6th Form Study. Supervision in this area is provided to encourage the student to develop the self-discipline needed for success at University or College of Further Education. In Years 13 and 14 our young people were expected to undertake a range of responsibilities in keeping with their new status as Post-Compulsory students.

From September 2010 we expanded our curriculum offer and our links in the community by offering more subjects through the Newry & Mourne Area Learning Community. We offered 'A' levels in French and Drama through collaboration with St. Colman's College and St. Mark's respectively. We offered BTEC National in Engineering and Construction in collaboration with the SRC. These were in addition to the AS level subjects listed below:

- | | | |
|----------------------|-----------------------------------|------------------------------|
| ▪ Art | ▪ Health & Social Care (6 units) | ▪ Physical Education |
| ▪ Biology | ▪ Health & Social Care (12 units) | ▪ Physics |
| ▪ Business Studies | ▪ History | ▪ Psychology |
| ▪ Chemistry | ▪ ICT | ▪ Religious Education |
| ▪ English Literature | ▪ Mathematics | ▪ Spanish |
| ▪ French | ▪ Music | ▪ Travel & Tourism (6 units) |
| ▪ Geography | | |

CEIAG - Careers Education, Information, Advice and Guidance

CEIAG Team comprises 6 staff from across subject areas.

Timetabled classes were delivered as follows:

KS3-Yrs 8,9,10.	Education for Employability – set of lessons delivered as part of PHSE Programme. Taught in rotated modules by members of the Careers Team.
Year 11	Four week package delivered through PSHE
Year 12	One class each week for 12V2. Careers module for other Year 12 classes included within LLW
Year13/14 and	No timetabled classes but CEIAG incorporated into PHSE programme delivered by tutors.

This was supplemented by Year 12 interviews conducted by Head of Department or Careers Officer. Year 13 and Year 14 pupils had interviews with a Careers Officer or Head of Department as requested.

Year 11 and Year 13 pupils completed Work Placements and 12V2 pupils participated in a weekly Day Release Placement Scheme involving local businesses.

Year 13 pupils attended the UCAS Convention in March and had the benefit of a presentation on Scottish Universities.

Year 14 students attended QUB and UJJ open days in September.

Both Year 13 and Year 14 pupils had the opportunity to attend other specialist talks during the year.

In November, Year 14 pupils benefited from an Interview Skills Day which concluded with mock interviews led by representatives from local businesses and training organisations.

In March, Year 12 pupils were able to attend our annual Careers Convention and pupils hoping to undertake Post 16 studies at Newry High School were able to attend an Information Evening.

Visiting speakers also gave presentations during the year.

Training sessions for Years 11 and 14 were led by Sentinus.

As CEIAG is now a whole-school area for development each subject area delivered career focused lessons to KS3 classes.

STEM related events were organised by departments as appropriate and pupils also had opportunities to attend STEM workshops within the ALC and further afield.

Pupils also had opportunities to attend other ALC organised events.

EXAM PERFORMANCE

Performance Tables Information 2011: Key stage 4

Scope: National Curriculum Year

Curriculum Year 12

Summary Data	All	Percentage	Male	Percentage	Female	Percentage
Number of candidates	70	100%	40	57.14%	30	42.86%
Achieving 7+A*-C incl English & Maths	22	31.43%	8	20.00%	14	46.67%
Achieving 7+ A*-C	29	41.43%	13	32.50%	16	53.33%
Achieving 5+A*-C incl English & Maths	25	35.71%	11	27.50%	14	46.67%
Achieving 5+A*-C	36	51.43%	17	42.50%	19	63.33%
Achieving 5+A*-E	50	71.73%	27	67.50%	23	76.67%
Achieving 5+A*-G	54	77.14%	29	72.50%	25	83.33%
Achieving 5+A*-G incl English & Maths	52	74.29%	28	70.00%	24	80.00%
Achieving 1-4 A*-C	22	31.43%	15	37.50%	7	23.33%
Achieving 1-4 A*-G	12	17.14%	10	25.00%	2	6.67%
Achieving 1+ A*-C	58	82.86%	32	80.00%	26	86.67%
Achieving 1+ A*-G	66	94.29%	39	97.50%	27	90.00%
Achieving an Entry Level Qualification	67	95.71%	39	97.50%	28	93.33%
Achieving 2+ A*-C in Science	30	42.86%	16	40.00%	14	46.67%
Achieving Level 2 in Functional English & Maths	25	35.71%	11	27.50%	14	46.67%
Achieving Level 1 in Functional English & Maths	55	78.57%	30	75.00%	25	83.33%
Achieving 1+ A*-C in a MFL	5	7.14%	0	0.00%	5	16.67%
Achieving 0.5+ A*-G in a MFL	6	8.57%	1	2.50%	5	16.67%
Candidates aged 15	70	100%	40	100%	30	100%
Candidates aged under 15	0		0		0	
Average Capped Score	272.06		259.82		288.37	
Average Score per Student	320.41		300.52		346.93	
Total number of entries	602.00		347.00		255.00	
Average Score per Entry	37.26		34.64		40.82	
Students excluded from P1 Cohort	0.00		0.00		0.00	

Performance Tables Information 2011: Age 16-18

Scope: National Curriculum Year:

Curriculum Year 14

Summary Data	All	Percentage	Male	Percentage	Female	Percentage
Number of Candidates	59	100%	24	40.68%	35	59.32%
Average Point Score per Student	660.51		620		688.29	
Average Point Score per Entry	214.71		201.08		224.09	
Achieving 3+ A*-C	30.00	50.85%	9.00	37.50%	21.00	60.00%
Achieving 3+ A*-E	48.00	81.36%	17.00	70.83%	31.00	88.57%
Achieving 2+ A*-E	59.00	100%	24.00	100%	35.00	100%
Achieving 1+ A*-E	59.00	100%	24.00	100%	35.00	100%
Students excluded from P1 Cohort	0.00		0.00		0.00	

GCSE Results 2011 - Please note a residual deviation of 6 points is equal to one GCSE Grade

Subject	No	A*	A	B	C	D	E	F	G	U	%	%	Residual
											A*-C	A*-G	
Art & Design	14	2	1	3	3	3	2	0	0	0	64.3	100.0	2.99
		14.3	7.1	21.4	21.4	21.4	14.3	0.0	0.0	0.0			
Biology	24	0	4	8	11	1	0	0	0	0	95.8	100.0	-1.17
		0.0	16.7	33.3	45.8	4.2	0.0	0.0	0.0	0.0			
Business Studies	14	0	2	5	2	3	2	0	0	0	64.3	100.0	1.16
		0.0	14.3	35.7	14.3	21.4	14.3	0.0	0.0	0.0			
Chemistry	24	0	3	4	8	6	1	2	0	0	62.5	100.0	-5.92
		0.0	12.5	16.7	33.3	25.0	4.2	8.3	0.0	0.0			
Design & Technology	9	0	0	0	1	2	1	5	0	0	11.1	100.0	-1.36
		0.0	0.0	0.0	11.1	22.2	11.1	55.6	0.0	0.0			
English	54	0	5	12	13	20	3	1	0	0	55.6	100.0	-0.07
		0.0	9.3	22.2	24.1	37.0	5.6	1.9	0.0	0.0			
English Literature	3	0	3	0	0	0	0	0	0	0	100.0	100.0	3.1
		0.0	100.0	0.0	0.0	0.0	0.0	0.0	0.0	0.0			
French	6	0	0	1	4	1	0	0	0	0	83.3	100.0	-2.34
		0.0	0.0	16.7	66.7	16.7	0.0	0.0	0.0	0.0			
Geography	26	0	8	3	7	4	3	0	0	1	69.2	96.2	-1.19
		0.0	30.8	11.5	26.9	15.4	11.5	0.0	0.0	3.8			
History	21	2	5	7	4	2	0	0	1	0	85.7	100.0	3.37
		9.5	23.8	33.3	19.0	9.5	0.0	0.0	4.8	0.0			
Home Economics	7	2	1	1	0	1	2	0	0	0	57.1	100.0	8.07
		28.6	14.3	14.3	0.0	14.3	28.6	0.0	0.0	0.0			
ICT	31	3	14	1	9	2	1	1	0	0	87.1	100.0	8.73
		9.7	45.2	3.2	29.0	6.5	3.2	3.2	0.0	0.0			
LLW	58	0	9	18	10	11	4	6	0	0	63.8	100.0	1.07
		0.0	15.5	31.0	17.2	19.0	6.9	10.3	0.0	0.0			
Mathematics	54	0	8	11	16	12	5	1	0	1	64.8	98.1	0.19
		0.0	14.8	20.4	29.6	22.2	9.3	1.9	0.0	1.9			
MVRUS	13	0	2	2	3	2	2	0	0	2	53.8	84.6	3.43
		0.0	15.4	15.4	23.1	15.4	15.4	0.0	0.0	15.4			
Music	3	0	1	2	0	0	0	0	0	0	100.0	100.0	4.32
		0.0	33.3	66.7	0.0	0.0	0.0	0.0	0.0	0.0			
P.E.	18	0	3	5	4	5	1	0	0	0	66.7	100.0	2.86
		0.0	16.7	27.8	22.2	27.8	5.6	0.0	0.0	0.0			
Physics	24	0	1	5	16	1	0	0	0	1	91.7	95.8	-5.08
		0.0	4.2	20.8	66.7	4.2	0.0	0.0	0.0	4.2			
R.E.	43	2	5	4	14	9	5	1	3	0	58.1	100.0	-4.08
		4.7	11.6	9.3	32.6	20.9	11.6	2.3	7.0	0.0			
Science (DA)	20	0	0	0	8	9	2	1	0	0	40.0	100.0	-0.97
		0.0	0.0	0.0	40.0	45.0	10.0	5.0	0.0	0.0			
Science (SA)	15	0	0	8	2	4	0	1	0	0	66.7	100.0	11.69
		0.0	0.0	53.3	13.3	26.7	0.0	6.7	0.0	0.0			
Industrial Studies	29	0	0	0	11	18	0	0	0	0	37.9	100.0	n/a
		0.0	0.0	0.0	37.9	62.1	0.0	0.0	0.0	0.0			
Total %											65.1	99.0	
Totals	510	11	75	100	146	116	34	19	4	5			
Totals %		2.2	14.7	19.6	28.6	22.7	6.7	3.7	0.8	1.0			
Cumulative %		2.1	16.9	36.5	65.1	87.8	94.5	98.2	99.0	100.0			

Year 14 A Level Results 2011 - Please note a residual deviation of 30 points is equal to one A2 level grade

Subject	No	A*	A	B	C	D	E	U	%	%	Residual
									A-C	A-E	
Art & Design	6	1	2	3	0	0	0	0	100.0	100.0	-0.83
		16.7	33.3	50.0	0.0	0.0	0.0	0.0			
Biology	26	0	2	8	10	5	1	0	76.9	100.0	-0.77
		0.0	7.7	30.8	38.5	19.2	3.8	0.0			
Business Studies	11	1	3	4	2	1	0	0	90.9	100.0	4.5
		9.1	27.3	36.4	18.2	9.1	0.0	0.0			
Chemistry	7	0	0	2	1	4	0	0	42.9	100.0	-20
		0.0	0.0	28.6	14.3	57.1	0.0	0.0			
English Literature	5	1	0	1	3	0	0	0	100.0	100.0	-18.86
		20.0	0.0	20.0	60.0	0.0	0.0	0.0			
Geography	14	0	3	5	3	3	0	0	78.6	100.0	-4.07
		0.0	21.4	35.7	21.4	21.4	0.0	0.0			
Health & Social Care (6)	15	0	2	7	5	1	0	0	93.3	100.0	-7
		0.0	13.3	46.7	33.3	6.7	0.0	0.0			
Health & Social Care (12)	7	0	4	1	2	0	0	0	100.0	100.0	24.64
		0.0	57.1	14.3	28.6	0.0	0.0	0.0			
History	13	0	1	9	2	1	0	0	92.3	100.0	27.05
		0.0	7.7	69.2	15.4	7.7	0.0	0.0			
ICT	18	0	2	9	4	3	0	0	83.3	100.0	18.21
		0.0	11.1	50.0	22.2	16.7	0.0	0.0			
Maths	8	0	0	4	1	1	1	1	62.5	87.5	-28.75
		0.0	0.0	50.0	12.5	12.5	12.5	12.5			
Music	2	0	0	0	1	0	1	0	50.0	100.0	55
		0.0	0.0	0.0	50.0	0.0	50.0	0.0			
PE	8	1	1	3	2	0	1	0	87.5	100.0	23.13
		12.5	12.5	37.5	25.0	0.0	12.5	0.0			
Psychology	10	0	2	2	2	2	2	0	60.0	100.0	-25.39
		0.0	20.0	20.0	20.0	20.0	20.0	0.0			
Physics	4	0	0	0	1	1	2	0	25.0	100.0	0
		0.0	0.0	0.0	25.0	25.0	50.0	0.0			
RE	8	0	1	3	2	2	0	0	75.0	100.0	-8.03
		0.0	12.5	37.5	25.0	25.0	0.0	0.0			
Travel & Tourism	12	0	4.0	3.0	4.0	1.0	0.0	0.0	91.7	100.0	7.5
		0.0	33.3	25.0	33.3	8.3	0.0	0.0			

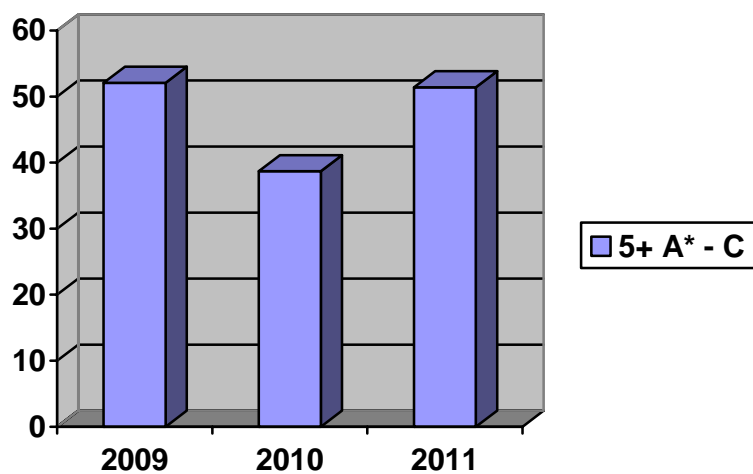
Totals	174	4	27	64	45	25	8	1
Totals %		2.3	15.5	36.8	25.9	14.4	4.6	0.6
Cumulative %		2.3	17.8	54.6	80.5	94.8	99.4	100.0

	2011	2010	2009	2008	2007
A* - C	80.5	80.80%	71.6	81.3	76.5
A* - E	99.4	98.40%	96.1	99.1	96.3

EXAMINATION TRENDS

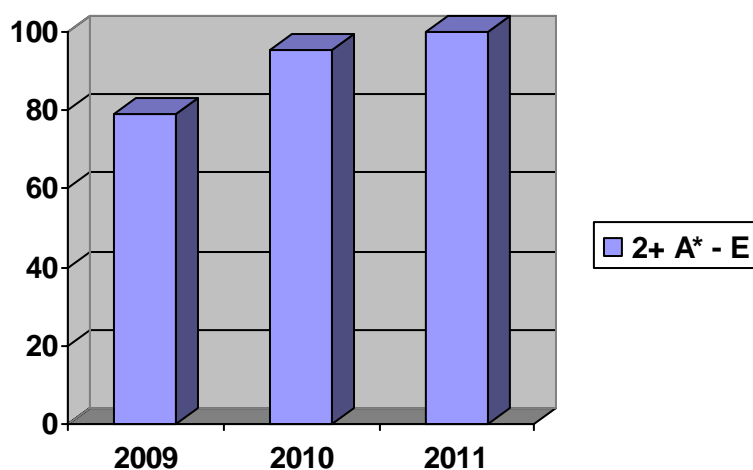
GCSE Results 3 Year Summary % 5+ A* - C

Year	2009	2010	2011
% 5+ A* - C	52.08	38.71	51.43



A level Results 3 Year Summary % 2+ A Levels at A – E

Year	2009	2010	2011
% 2+ A* - E	79.07	95.45	100



GCSE Summary Examination Performance Year 12 2008 - 2011

Subject	% A-C				% A - G				Residuals			
	2011	2010	2009	2008	2011	2010	2009	2008	2011	2010	2009	2008
Art & Design	64.3	72.2	84.0	72.0	100.0	100.0	100.0	96.0	2.99	6.9	5.11	2.03
Biology	95.8	x	x	x	100.0	x	x	x	-1.17		x	x
Business Studies	64.3	57.9	66.7	85.7	100.0	100.0	100.0	92.9	1.16	0.49	0.56	1.02
Chemistry	62.5	x	x	x	100.0	x	x	x	-5.92	x	x	x
Design & Tech	11.1	41.2	41.7	37.5	100.0	52.9	83.3	93.8	-1.36	-10.88	-0.6	-0.51
English	55.6	48.6	61.5	59.5	100.0	94.6	100.0	96.2	-0.07	-1.48	0.17	-0.97
English Literature	100	88.9	100.0	76.8	100.0	100.0	100.0	100.0	3.1	-0.96	1.58	-1.41
French	83.3	100.0	100.0	x	100.0	100.0	100.0	x	-2.34	4	3.5	x
Geography	69.2	80.8	81.0	91.7	96.2	100.0	95.2	100.0	-1.19	0.2	0.74	3.22
History	85.7	90.6	94.7	92.3	100.0	100.0	100.0	100.0	3.37	3.94	4.72	1.93
Home Economics	57.1	66.7	60.0	23.1	100.0	94.4	96.7	76.9	8.07	2.1	0.46	-3.4
ICT	87.1	90.6	94.6	94.7	100.0	100.0	100.0	100.0	8.73	9.19	8.19	9.8
LLW	63.8	65.3	62.2	58.0	100.0	98.7	98.8	94.3	1.07	3.39	1.68	-0.1
Mathematics	64.8	53.9	57.7	67.1	98.1	97.4	100.0	97.5	0.19	0.08	-0.06	2.57
MVRUS	53.8	41.7	0.0	33.3	84.6	83.3	76.9	86.7	3.43	3.41	0.21	1.66
Music	100	57.1	77.8	100.0	100.0	100.0	100.0	100.0	4.32	2.5	-0.95	2.03
P.E.	66.7	37.5	73.7	71.4	100.0	100.0	100.0	100.0	2.86	3.33	2.53	4.24
Physics	91.7	x	x	x	100.0	x	x	x	-5.08	x	x	x
Polish	x	100.0	x	x	x	100.0	x	x	x	x	x	x
R.E.	58.1	53.1	53.3	76.0	100.0	96.9	83.3	96.0	-4.08	-6.63	-10.21	-6.22
Science (DA)	40	50.9	74.1	91.1	100.0	96.5	100.0	100.0	-0.97	-1.1	-2.07	-0.13
Science (SA)	66.7	47.8	28.6	55.6	100.0	100.0	100.0	100.0	11.69	7.23	9.36	11.5
Industrial Studies	37.9	45.8	x	x	100.0	100.0	x	x	x	x	x	x
Totals	65.1	59.1	67.3	71.3	99.0	96.2	96.3	97.0	x	x	x	x

A Level Summary Examination Performance Year 14 2008 - 2011

Subject	% A - C				% A - E				Residuals			
	2011	2010	2009	2008	2011	2010	2009	2008	2011	2010	2009	2008
Art & Design	100	100	100.0	100.0	100.0	100.0	100.0	100.0	-0.83	34.8	-0.6	0.0
Biology	76.9	80	76.9	50.0	100.0	100.0	100.0	93.8	-0.77	-12.1	-3.6	-14.2
Business St.	90.9	66.7	88.9	75.0	100.0	100.0	100.0	100.0	4.50	-4.3	12.9	5.6
Chemistry	42.9	50	33.3	66.7	100.0	100.0	66.7	100.0	-20.00	-22.5	-16.5	-22.2
English Lit.	100	100	66.7	66.7	100.0	100.0	100.0	100.0	-18.86	-3.3	-6.2	-10.3
Geography	78.6	100	100.0	100.0	100.0	100.0	100.0	100.0	-4.07	17.9	6.1	22.1
Health & Soc Care (6)	93.3	83.3	78.6	100.0	100.0	100.0	100.0	100.0	-7.00	4.6	3.6	8.7
Health & Soc Care (12)	100	91.7	50.0	90.0	100.0	100.0	100.0	100.0	24.64	4.6	-8.3	3.0
History	92.3	100	100.0	100.0	100.0	100.0	100.0	100.0	27.05	31.6	20.5	21.0
ICT	83.3	77.8	80.0	85.7	100.0	100.0	100.0	100.0	18.21	-1.8	9.3	-0.2
Maths	62.5	87.5	35.0	55.6	87.5	100.0	75.0	77.8	-28.75	-7.2	-12.4	26.1
Music	50	100	100.0	60.0	100.0	100.0	100.0	100.0	55.00	29.0	-6.7	-5.3
PE	87.5	91.7	37.5	80.0	100.0	100.0	100.0	100.0	23.13	5.3	-0.8	2.0
Psychology	60	50	54.5	100.0	100.0	91.7	100.0	100.0	-25.39	-23.7	-4.3	-0.2
Physics	25	0	16.7	33.3	100.0	100.0	83.3	100.0	0.00	-33.3	-26.4	-13.3
RE	75	75	100.0	100.0	100.0	100.0	100.0	100.0	-8.03	-7.5	20.0	13.3
Travel & Tourism	91.7	100	100.0	100.0	100.0	100.0	100.0	100.0	7.50	9.3	15.6	-4.9
Total	80.5	80.8	71.6	81.3	99.4	98.4	96.1	99.1				

ACHIEVEMENTS AND STANDARDS

GCSE Results:

	2011	2010	2009	2008
5 A* - C Inc Maths & English	35.71	30.00	41.76	47.80
5 A* - C all subjects	48.57	38.89	51.65	56.18
% A* - C grades	64.3	59.1	67.3	71.3
% A* - G grades	98.8	96.2	96.3	97.0

Benchmarking data:

The 2011 GCSE results were above the benchmark median target for 5 A*-C including Maths and English however for all subjects the results were only slightly above the benchmark target for the lower quartile.

GCE Results:

Year 14 (A2)

	2011	2010	2009	2008
% A* - C	78.7	80.80	71.6	81.3
% A* - E	98.9	98.4	96.1	99..1

Benchmarking data:

The 2011 GCE A2 results met the 95th percentile for the % of pupils achieving 2 or more grades A* - E (based on schools with 20 – 29.99% of children entitled to free school meals).

Year 13 (AS)

	2011	2010	2009	2008
% A* - C	62.6	63	64.7	56.1
% A* - E	84.8	87.6	88.5	89.9

In October 2010 the school underwent a standard inspection. The following statements are excerpts from the ETI report:

- The main strengths of the school include: The good standards achieved by the pupils in public examinations;
- Over the past three years, nearly half of the subjects in which the pupils achieve grades A*-C are more than five percentage points above (and a further quarter within five percentage points of) the Northern Ireland (NI) average for non-selective schools.
- Approximately a quarter of the subjects are five or more percentage points below the NI average for non-selective schools.
- Over the past three years, the number of pupils achieving A*-C in five or more General Certificate of Secondary Education (GCSE) examinations, including English and mathematics, is good.
- However, over the same period the number of pupils achieving at this level has decreased, with a notable drop in the last academic year.
- Over the same three-year period, there has been a steady improvement in the number of pupils achieving A*-E in two or more subjects at General Certificate of Education (GCE) Advanced Level. There is a similar upward trend for pupils achieving grades A*-C in at least three subjects.

PASTORAL CARE

The school places great emphasis on good behaviour and discipline and believes they are key factors in the success of learning and teaching. The school aspires to create a community which demonstrates respect, responsibility and excellence. Inappropriate behaviour is therefore not accepted in school, on the way to school, and during school outings or other activities.

In 2010 the school reviewed discipline at all levels and put a new strategy in place to promote positive behaviour and simplify the system of rewards and sanctions. Good discipline remains a challenge for the school and requires constant vigilance. The Positive Behaviour Co-ordinator has responsibility for monitoring and reviewing the merit system.

In the first instance, the school aims to prevent misbehaviour by good teaching and positive relationships between pupils and staff. Underpinning this is the School Positive Behaviour Policy and Code of Conduct, which provide detailed guidance on the standards expected, and the sanctions that will be applied. These sanctions range from giving extra work through to detention, to supervised support and suspension in serious cases.

Persistent misbehaviour may result in a range of strategies being applied. Examples of strategies employed could include the pupil being placed on the Special Needs Code of Practice, the pupil being monitored by daily report or uniform report, involvement of the SELB Behaviour Management Team and inviting parents into school to take responsibility for their own child during lessons, break and/or lunchtime.

In very serious cases an interview with the Chairman of Governors and/or the whole Board of Governors may be required and, if there is not a resolution of the problem, permanent exclusion will be considered.

Both Vice-Principals, along with the Heads of Year, regularly monitor behaviour and the school makes every attempt to treat all pupils fairly within a policy which sets very high standards for everyone.

Pupil attendance is addressed using a member of the ancillary staff to contact the parents of an absent pupil on the third day of absence by phone. Form Tutors and Year Heads monitor pupil attendance and contact parents regarding attendance issues.

The Vice Principals met regularly with the Education Welfare Services Officer from the Southern Education and Library Board to review attendance figures and warn parents by letter or refer the case to the Education Welfare Officer for intervention if attendance is deemed unsatisfactory.

Good attendance is rewarded and praised at assemblies.

FINANCIAL SUMMARY

Newry High School, like many schools, has been facing a very challenging time financially. The school has benefited in previous times with a strong intake into Year 8 of approximately 95 pupils. However, in recent years, the intake has fallen by approximately 30-35 per year. Year 8 in 2010-2011 was 61 pupils.

As a school we have been aware of the long term financial prospect which is why we have had to gradually reduce our staffing levels. This reduction of staff has been an exceptionally difficult undertaking. Over the last few years, we have had to increase our some class sizes and streamline parts of our curriculum. For example, in 2010-2011, practical subjects at Key Stage 3 went from 5 to 4 streams, academic subjects in Year 8 went from 4 to 3 streams; Maths and English at Key Stage 4 went from 5 to 4 groups and tutor groups went from 4 to 3 groups. All this has been necessary in order to maintain the essential elements of the curriculum while reducing our staffing levels. We were not able to offer GCSE Technology this year.

A cost cutting programme has been put in place to try to reduce our running costs, with staff focusing on the efficient use of resources. However, further reductions in staffing (teaching and non-teaching) are required in an attempt to reduce the long term budget deficit.

Summary of expenditure at end of financial year 2010/2011

	Total Cost at March, 2011 (£)
Teaching Staff	1,737,660
Auxiliary Staff	<u>161,090</u>
Ancillary Staff	<u>63,431</u>
Total Staffing	1,962,182
Running Costs	<u>305,511</u>
Total Costs	<u>2,267,692</u>
Balance left at year end	<u>89,608</u>

PUPIL SUCCESSES – OVERVIEW OF THE YEAR

The 2010-2011 school year saw a number of excellent performances in GCSE and A Level examinations.

Top achieving pupils at GCSE were Jane Bingham, Conor Fullerton, Claire Gamble, Jonathan Gray, Megan Hanna, Stephen Harvey, Lauren Henning, Katherine Holmes, Brianna Johnston, Sarah Kernaghan, Kathryn McCrum and Taja McIlroy.

Top achieving students at A Level were Kirsty Auterson, Andrew Baird, Kathryn Baird, Karen Bickerstaff, Victoria Brady, Emma Chambers, Brian Davidson, Emma Ferris, Sonu Gurung, Rebekah Malcomson, Aaron Marks, Ruth McMinn, Julia Sokele, Paul Taylor, Rebecca Taylor and Aleksandra Sawicka.

While academic excellence is central to the life and work of Newry High School, the wider curriculum, and indeed the hidden curriculum here, is what shapes character, inculcates values, and facilitates moral, physical, intellectual, social and spiritual development. A very rich tapestry of growth opportunities was provided here during the last academic year, through sport, travel, after-school activities and community involvement. In this annual report to parents/guardians, we can only present a small selection of examples which exemplify the comprehensive range of opportunities for fulfilled learning and personal development which took place in 2010-2011

- In September, a multilingual Assembly was held to celebrate European Day of Languages. The lesson was read in French, Russian, Polish, Lithuanian, Nepali and prayers were said in Malayalam and Punjabi.
- Class 10A pupils travelled with the Modern Languages Department to St George's Market in Belfast where they participated in food and language taster sessions, language, media, art and theatre workshops as part of the Opportunity Europe and Beyond Exhibition.
- In February, Year 9 pupils attended a STEM careers event in St. Colman's College organised by Newry ALC and Year 10 pupils attended an IT workshop at St. Mary's High School.
- The Science Department also had a very busy year. In September, Year 11 and 12 pupils enjoyed a Crime Scene Investigation Workshop in school and Year 9 took part in an Ecological Field Study at Warrenpoint Beach and Kilbroney Forest Park. The whole of Year 8 went to Belfast Zoo in November. 12A visited the Annual Chemistry at Work Exhibition at Queen's University, Belfast. Year 10 went to the Navan Centre in Armagh and Year 8 attended an "Exploding Vegetables" Green Energy Workshop, also at Queen's University. In March, three Year 10 pupils represented Newry High School in the annual Key Stage 3 Science Quiz in St Patrick's High School, Keady.
- In the History Department, Year 8 students visited Carrickfergus Castle as part of their study of the Normans. Year 10 visited the Sean Hollywood Arts Centre to view a Holocaust exhibition. Some of them also attended a Holocaust Memorial event in Newry.
- In Citizenship, Year 12 pupils visited Stormont and were hosted by Mr Danny Kennedy. As part of Local Democracy week Michael Willis was selected to shadow the Deputy Lord Mayor, Karen McKevitt for a day to gain an understanding of her role.
- The Maths Department entered pupils in the UK Schools' Junior and Intermediate Maths Challenges. In the Junior Challenge, a special mention has to be made of Stephen McClelland, 8A, who achieved a Gold certificate, while Oliver Willetts of 9A achieved a Silver certificate. Year 9 Bronze certificate winners were Abbey Barton and Sophie Hempkin and from Year 8, Gary Murphy.

In the Intermediate section, Year 12 students Brianna Johnston and Stephen England achieved Silver certificates while Sarah Kernaghan, Megan Hanna and Lauren Henning were awarded Bronze.

- In Home Economics news, a School Nutrition Action Group has been set up which looks at all aspects of food within the school. The Health Promotion Agency spoke to all Year 8 pupils about the health risks connected with too much salt in the diet. The Livestock Marketing Commission for Northern Ireland gave a cookery demonstration to Year 10 and 11 pupils. Three pupils entered the Rotary Youth Leadership Development Competition and Andrew Baird progressed to the second round.
- Pupils in the School Choir and Orchestra provided the music for the annual Prize Giving Ceremony. In November 10A organised and performed two charity concerts at lunch times, with £200 being raised for the Hospice and Charlene's Project. Despite the Annual Carol Service being cancelled in December due to the inclement weather the Choir performed their prepared pieces at full school assembly in January.
- Football - The Under 15 Boys were South Down Schools' League Champions. They put in some fine performances, only losing once throughout the year. The Under 13 team were Runners-up in the South Down Schools' League, just missing out on the top spot.
- Athletics - Kevin Murray, Year 13, was Co Down and Ulster Champion in the Senior Boys' Javelin. He then threw over 50m to win a Silver Medal at the Irish Schools' Championships. Mark Graham also represented the school at the Irish Schools' Championships in the long jump, following on from a Gold medal at the Co Down Championships and a Bronze at the Ulster Championships. Other athletes who won medals at the Co Down Championships included Oliver Willetts, Year 9, Junior Boys' Relay Squad, Ben Graham, Ciaran Magill and Deane Williamson and the Intermediate and Senior Relay Squads. Oliver Willetts and Aimee Magowan were selected to represent Co Down in the Under 14 Inter-Counties competition.
- Cross-country - Steven Priestly, Year 8 and Kevin Murray, Year 13, both won medals at the Newry and Mourne Cross Country Championships.
- Basketball - The Year 8 team won the Ulster Schools' Basketball Shield after a semi-final victory against the Abbey Grammar School and a final win against St Patrick's, Dungannon.
- Girls' Hockey - The Under 15 and 16 teams competed in the Mid-Ulster Hockey Leagues and Cups, playing matches against schools such as Dromore, Armagh and Markethill High Schools.
- Girls' Football - Four teams competed in the Co Down 5-a-side tournament. The Year 8 and 9 teams narrowly missed a place in the final after an exciting penalty shoot-out. Newry City Football Club led a six-week after-school club for girls, which proved very popular. Two teams competed in the Co Armagh 7-a-side tournament in June
- The Year 9 Girls' team qualified for the Ulster Under-14 Athletics finals after coming 3rd in the regional event. Congratulations must go to Aimee Magowan, who was selected to represent Co Down in the Javelin at the Under 14 Inter-Counties event.
- In the Art & Design Department, the year started with the 'Community Safety Youth Competition'. Students had to design and create a story board based on various topics. There were over 800 entries from Newry & Mourne and two students from Newry High School, Caitlin Kearns and Hannah Kennedy, were selected.

- This year, moderators selected two students to have their work selected as part of the True Colours Exhibition in Belfast. Katherine Holmes (GCSE) and Terri Anne Ogle (A2) both produced highly innovative work which captured the eye of the moderator in the first instance.
- Emma Chambers was awarded 'Highly Commended' by the Arts Society of Ulster. They chose her work from all the work exhibited at The True Colours Exhibition. This is an amazing achievement.
- Seventeen pupils have been completing their Duke of Edinburgh Bronze Award, undertaking a wide range of activities. Their expeditions took place in the Mourne in June and September 2011. Both groups were excellent and worked together with enthusiasm and a real team spirit.
- As usual, Newry High School was actively involved in many charity fund-raising events throughout the year. On Friday, 22nd October we all travelled to Gosford Forest Park to participate in a sponsored walk. A magnificent total of £3890 was raised in this event. This enabled us to donate £1000 to Newry Hospice in sponsorship of our Year 13 pupil, Geoffrey Hodgett's trek to Costa Rica. A further £1250 was donated to Dr Richard Barr on behalf of Charlene's Project at a special school assembly. Charlene Barr founded a school building project in Uganda before sadly losing her battle with Cystic Fibrosis at the age of 20. Funds raised by a Year 10 Charity Concert also went to this very worthy cause. Also in October, we raised £400 in our annual 'Jeans for Genes' non-uniform day. Another non-uniform day was held for Special Olympics Ireland and we were pleased to welcome representatives to our school assembly and to present a cheque for £300 to them.
- Pupils and staff attended the "World's Biggest Coffee Morning" in Newry Courthouse and presented a cheque for £250 to Macmillan Cancer Support. In December, five Year 13 pupils took part in the annual Newry Chamber of Trade Santa Fun Run, raising £500 for distribution to various local charities. Members of the Charity Committee also helped out at a bag packing event in Sainsburys supermarket, in which £1150 was raised for the Alzheimer's Society.
- In April, seven pupils took part in the Newry & Mourne District Council Schools' Table Quiz. Everyone did well, with Newry High being represented by Amy Bell in the winning team and Spiros Pasparakis in the team placed second.

We are very proud of the talent and endeavour of the students and the interest and commitment of our staff, teaching and non-teaching. We hope this report has given you an insight into the achievements of our students in the academic year 2010-2011. We would like on behalf of our Governors and staff to thank you, our parents/guardians, for your cooperation and support, and to ask for a similar commitment in 2011-2012. With this ongoing partnership, we can continue to improve the education we provide for all our young people.